

2306/639 Lonsdale Street Melbourne VIC

2 2

* Please book your inspections in advance. Otherwise, it may be cancelled unannounced.

* Photo identification will be required upon entering.

This spectacular two-bedroom, two-bathroom ultra-stylish CORNER apartment is within the sought-after MADISON building in the Upper West Side Towers.

- This exceptional home consists of a modern kitchen, which flows into the well-appointed living zone that opens up to the large balcony presenting stunning views of the city.

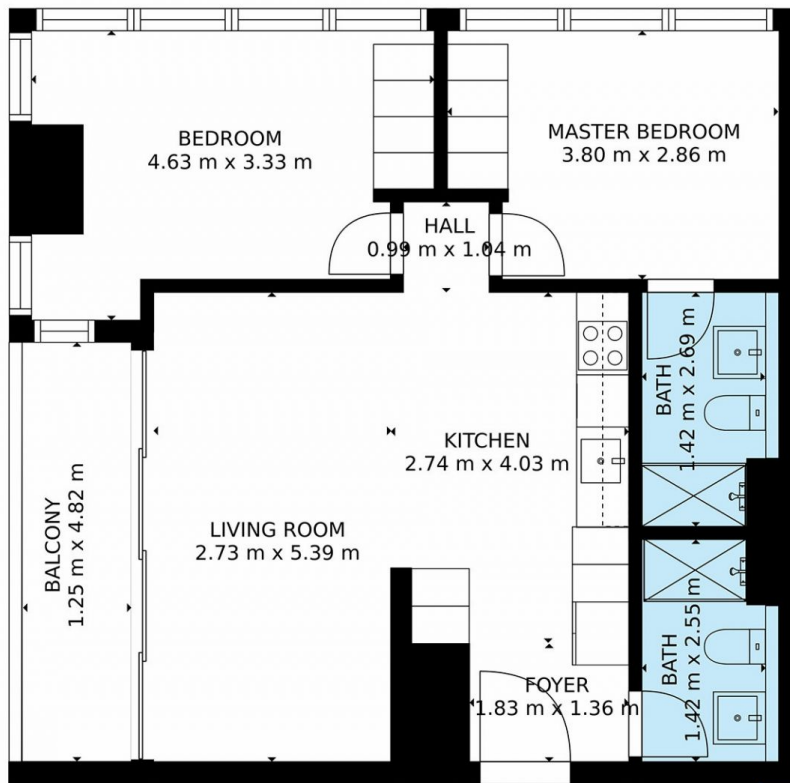
- The well-designed kitchen comes with stainless steel appliances, dishwasher, and plenty of storage options.

[For full version visit the website](https://www.maxion.com.au)

Type : Apartment
Price : \$ 492,000
Building Size : 74.97 sqm
View : <https://www.maxion.com.au/sale/vic/inner-city/melbourne/residential/apartment/7882455>



Charlotte Chen
(03) 9989 9958



Estimated areas
GLA FLOOR 1: 74 m², excluded 6 m²
Total GLA 74 m², total scanned area 80 m²
SIZES AND DIMENSIONS ARE APPROXIMATE, ACTUAL MAY VARY.

