



**2207/371 Little Lonsdale Street Melbourne VIC**

**2  1 **

Fully furnished.

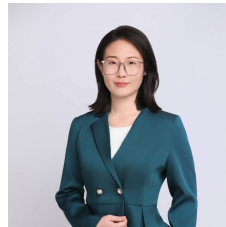
Designed with the highest quality interior finishes and fittings such as engineered timber floors, stone kitchen benchtops, stone splashbacks, 100% wool carpets, polished chrome fittings and European appliances.

A potential pocket in the heart of Melbourne, suitable for both investor and owner occupied. Southern Cross Station and tram stop at door's step. Just a short stroll to Melbourne University, RMIT City Campus, Queen Victoria Market, Flagstaff Garden, and Marvel Stadium.

Apartment features;  
-Stylish and sleek kitchen with Miele appliances

**Type** : Apartment

**View** : <https://www.maxion.com.au/lease/vic/inner-city/melbourne/residential/apartment/7864002>



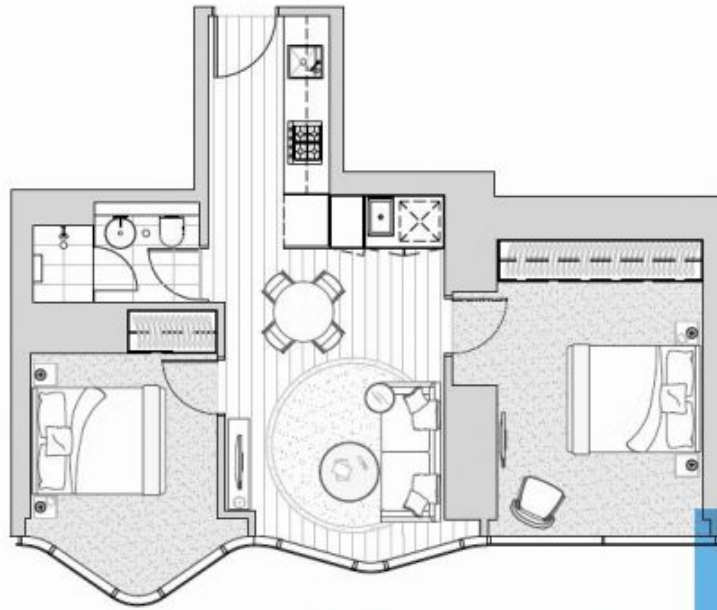
**Cactus Li**  
**(03) 9989 9958**



**Charlotte Chen**  
**(03) 9989 9958**

[For full version visit the website](https://www.maxion.com.au)

<https://www.maxion.com.au>



Bay 1 (7)

Bay 2 (4)

Bay 3 (1)



INDIVIDUAL APARTMENT PLAN  
Commercial & Residential

Plans are illustrative and may be varied in accordance with  
Contract of Sale. Furniture depicted is not included. Refer to  
the Contract of Sale for included fixtures & fittings. Areas are  
calculated using the Property Council of Australia's Standard of  
Measurement for Residential Property.

Revised: A 18/04/18: 18/03/17

BRADY